

# Magna Flow™

Pre-painted steel with  
magnesium added  
technology for superior  
corrosion resistance.

[colorcote.co.nz](http://colorcote.co.nz)

# A remarkable substrate that heals its own cuts

ColorCote® MagnaFlow™ takes our standard zinc/aluminium alloy-coated steel substrate to the next level with the addition of magnesium. This enables the zinc to 'flow', which seals the cut edges, preventing exposure to premature corrosion. This makes it ideal for harsher environments and those nearer the coast.

Choose the right ColorCote roof and it will always last longer.



Leading New Zealand innovation in pre-painted steel and aluminium



Manufactured and marketed in New Zealand for more than 40 years

## MagnaFlow™

MagnaFlow is a highly durable product with improved cut edge performance designed to give excellent colour retention and high formability at moderate cost.

### Technical

ColorCote MagnaFlow  
Conforms to AS/NZS2728:2013  
Suitable for ISO9223:2012  
Atmospheric Classifications C1 – C4

### Substrate

Hot-dipped zinc/aluminium/magnesium alloy coated steel coil.

### Pre-treatment

Corrosion resistant conversion coating.

### Primer

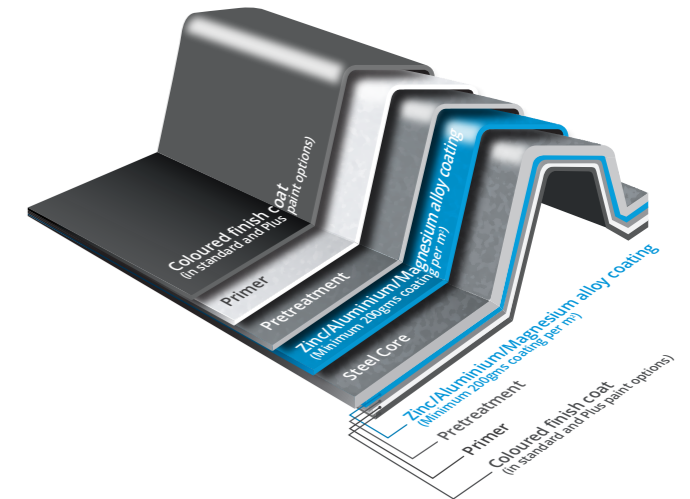
Flexible corrosion resistant primer. Nominal film thickness 7µ on the top side and 5µ on the reverse.

### Finish Coat

Flexible exterior acrylic, polyester or modified polyester coating. Nominal film thickness 18µ.

### Backing Coat

Shadow Grey (standard colour) wash coat, 5µ nominal thickness.



### Gloss

Nominally gloss levels are 25%, measured in accordance with ASTM D523-14 (60 degrees). A range of our colours can also be supplied in a low gloss version if required.

### Strippable Film

Products can be supplied with an optional strippable protective film at extra cost. This material has a relatively short life span when exposed to sunlight and weather. It should be removed either just before, or immediately after installation. If stored indoors strippable film should be removed within 12 months of delivery from ColorCote.

## Need an extra durable finish?

MagnaFlow PLUS (previously known as MagnaFlow X) uses exactly the same substrate but comes with a more protective paint system for use in chemical or industrial environments.

### Technical

ColorCote MagnaFlow PLUS  
Conforms to AS/NZS2728:2013  
Suitable for ISO9223:2012  
Atmospheric Classifications C1 – C4

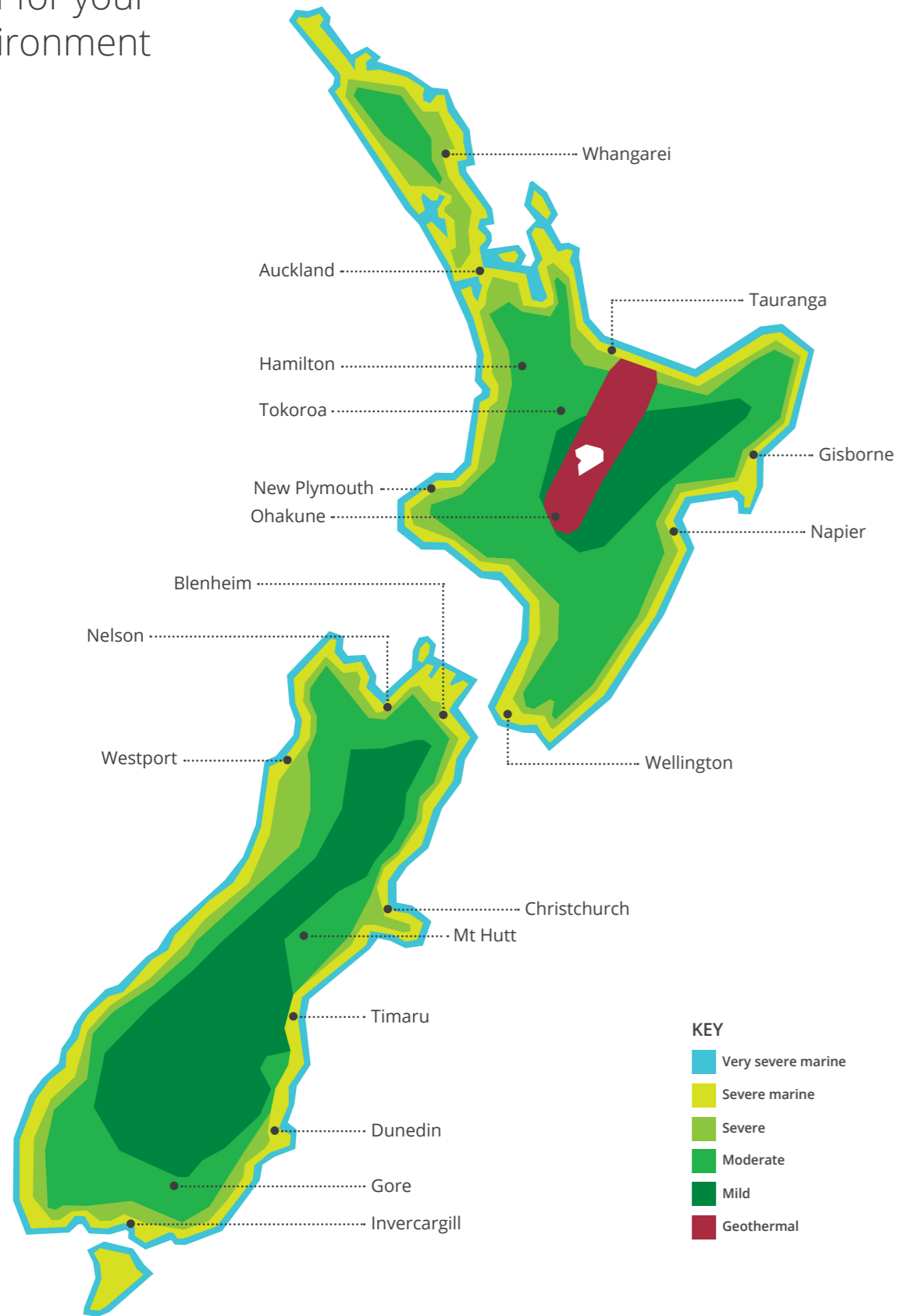
### Primer

Flexible corrosion resistant primer on both sides. Nominal film thickness 7µ on the top side and 5µ on the reverse.

### Finish Coat

The exterior coat of MagnaFlow PLUS is a chemical resistant thermosetting water borne acrylic paint system with a nominal 20µ film thickness. MagnaFlow PLUS is only available in a limited range of colours.

## Choose the right roof for your environment



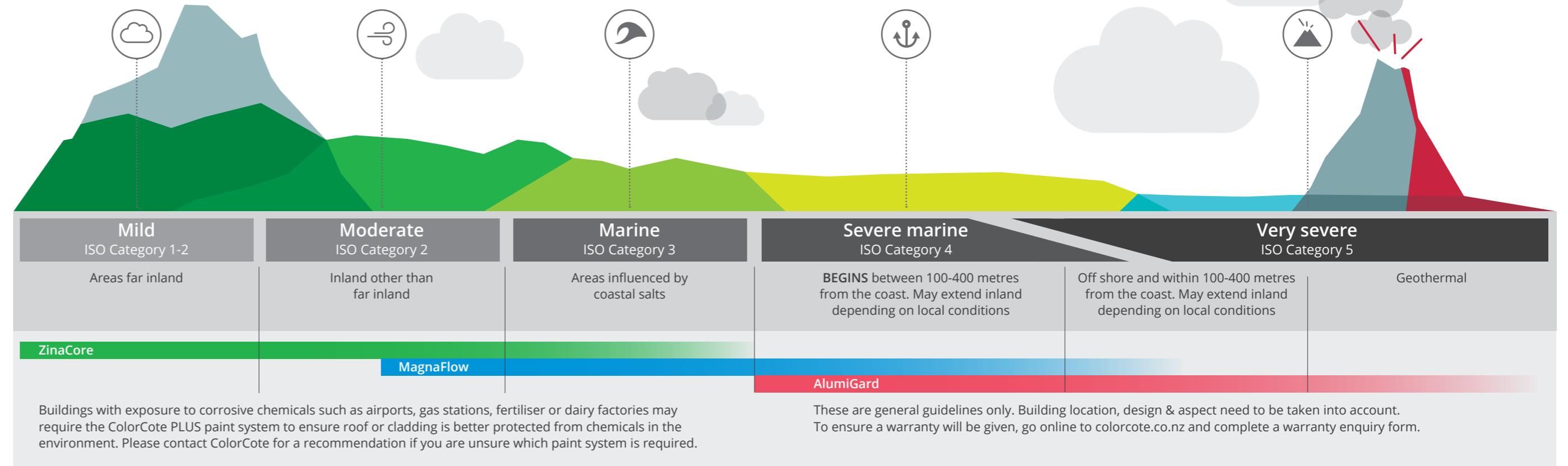
**KEY**

- Very severe marine
- Severe marine
- Severe
- Moderate
- Mild
- Geothermal

Representative of NZ environmental classification borders only. Contact ColorCote via the warranty enquiry form online or by using the free ColorCote app to determine the environmental classification, recommended product and warranty information for your specific roof or cladding project.

## Atmospheric environments

### Usage guide



## MagnaFlow performance testing

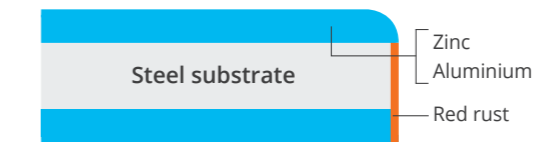
- Scratch resistance**  
Good scratch resistance. Testing includes needle scratch test – no marking of paint surface when a needle with a 2kg weight attached is drawn across. ASTM D5178-13.
- Impact resistance**  
AS/NZS2728:2013 Table 2.2 and Appendix E. No loss of paint adhesion after a test piece is struck on the reverse side with a specified force, in line with the test methodology described in Appendix E.
- Bend test**  
AS/NZS2728:2013 section 2.6.1 and Appendix F – No loss of paint adhesion when bent around a diameter equal to five times the thickness of the sheet.
- Heat resistance**  
Suitable for continuous service up to 100°C. Continuous service at higher temperatures may cause some colour change and damage to the paint film.

- Tested under New Zealand's most demanding environmental conditions.**  
Results from lab tests are backed up with ongoing testing in New Zealand's environmental conditions. Test sites are in Penrose, Auckland and Muriwai Beach, northwest of Auckland, providing real world testing in demanding industrial & marine environments.
  - Salt spray**  
Meets the requirements of AS/NZS2728:2013 Sections 2.8 and 2.10
  - Humidity resistance**  
Meets the requirements of AS/NZS2728:2013 Sections 2.8 and 2.9
  - QUV resistance (durability of coating system)**  
Meets the requirements of AS/NZS2728:2013 Section 2.8 and Table 2.4 after 4000hrs exposure.
- Note: Tests are conducted on a flat panel.

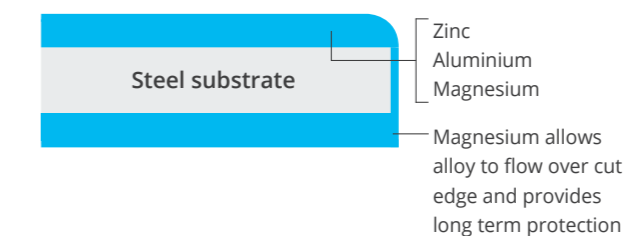
## The magic of magnesium

All steel roofs are susceptible to the elements along cut edges however the addition of magnesium to the standard zinc/aluminium alloy in Magnaflow provides superior corrosion resistance in this area. As time goes on it allows the protective metal coating to microscopically flow over the cut edge. At this point a sacrificial anticorrosive reaction takes place and a robust seal is created.

### Exposed cut on standard zinc/aluminium coated steel



### Anticorrosive reaction of MagnaFlow



## Warranty terms

Depending on the environment, Pacific Coilcoaters offers warranties of differing lengths on MagnaFlow for residential buildings.

		Environment (ISO CAT)		
		1-3	4	5
Roofing	Paint	18 yrs	15 yrs	15 yrs*
	Perforation	30 yrs	25 yrs	15 yrs*
Wall cladding	Paint	15 yrs	15 yrs	15 yrs*
	Perforation	25 yrs	20 yrs	15 yrs*
Guttering & Downpipes	Paint	10 yrs	10 yrs	10 yrs*
	Perforation	12 yrs	12 yrs	10 yrs*
Fascia	Paint	10 yrs	10 yrs	10 yrs*
	Perforation	15 yrs	15 yrs	15 yrs*

\* A warranty on MagnaFlow in ISO 5 is subject to prior approval by Pacific Coilcoaters. Commercial warranty details available upon request. Refer to specific warranty information for full terms and conditions, including exclusions and minimum maintenance requirements. Buildings close to industrial areas which are exposed to corrosive chemicals may require MagnaFlow PLUS (for added protection via a chemical resistant thermosetting water borne acrylic paint system). Visit [colorcote.co.nz](http://colorcote.co.nz) and complete the warranty enquiry form.

## Performance

### Outdoor durability

Colour change during service will depend on the colour chosen, aspect, design of the structure and the environment.

Some chalking may occur. A maximum rating of 2 is expected after 20 years exposure, when measured in accordance with AS/NZS1580.481.1.11:1998.

Scale is between 0 and 5 with a lower number indicating less chalking.

## Recommended end uses

**MagnaFlow** is suitable for roofing, cladding, and rainwater goods. MagnaFlow is ideal for animal shelters, flashings, interior uses, and exterior environments where corrosion levels are moderate.

**MagnaFlow PLUS** is suitable for roofing, cladding and rainwater goods in environments where there is a high risk of deterioration from corrosive chemicals in environments, such as on industrial sites.

For information concerning product use in areas not covered by ColorCote MagnaFlow or MagnaFlow PLUS, refer to the ColorCote AlumiGard technical information brochure or contact ColorCote for details.

You can check which ColorCote product is right for your building by completing the warranty enquiry form online at [colorcote.co.nz](http://colorcote.co.nz)



**Warranty app is available on the App Store and Google Play.**

## Roof pitch

Do not use a pitch less than three degrees (eight degrees for corrugated profile) to avoid ponding and premature degradation of the coating system.



### Important

**ColorCote MagnaFlow and MagnaFlow PLUS are not suitable for use in the following situations:**

- For water tanks or areas where a constantly wet environment is maintained.
- In direct contact with concrete or where lime deposits are evident.
- In contact with soil (allow a 75mm run off below cladding sheets to ground level).

## Handling and rollforming

To avoid damaging the paint surface the material must be handled carefully during transport and rollforming.

Pacific Coilcoaters does not recommend the use of rollforming lubricants on our products.

The use of rollforming lubricants will affect performance of pre-painted metal and will lead to staining and uneven, premature fading.



### Storage

#### On site – Wet or humid conditions

On no account should uninstalled coils and sheets be allowed to get and stay wet. Rain or condensation is drawn between the surfaces by capillary action, and then cannot evaporate normally. This can cause deterioration of the coating leading to a significantly reduced life expectancy and poor appearance.

#### Off site – Long term storage of coils

Rollforming performance may be affected if coils are stored for more than 12 months. Warranty for material painted more than 12 months prior is by application to ColorCote only.

## Touch-up paint

ColorCote is a baked on paint system which has different weathering characteristics to standard air drying paints. Do not use touch-up paint on ColorCote products. Scratches should be left alone to heal.

## Clean up

Installation procedures involving self-drilling screws, drills and hacksaws etc will leave deposits of swarf and metal particles. These particles including blind rivet shanks, nails and screws should be swept and washed from the roof regularly. Refer to the MRM Code of Practice for further information.

## Site practice

If nestable profiles become wet while closely stacked, formation of wet storage stain or 'white rust' is inevitable.

To minimise the possibility of inadvertent damage:

- **Inspect deliveries on arrival.** If moisture is present, individual sheets should be dried immediately with a clean rag and then stacked and filleted to allow air to circulate and complete the drying process.
- **Well ventilated storage is essential.** Always store metal products stacked and filleted under cover in clean, well-ventilated areas.
- **Outside storage.** Where outside storage is unavoidable, make provision for a fall to allow water to run off. Fillet the sheets and cover with tarpaulin, allowing air to move freely and circulate.
- **Installation.** Best practice is to install upon delivery to avoid exposure to wet or humid elements.

It is the responsibility of the roofing contractor to avoid damaging the roof sheeting during its installation and fixing. Never drag sheets from a pile. Remove by 'turning off' the stack. Lift sheets onto the roof, and do not drag over the eaves or the purlins. Use clean footwear. Remove swarf and other contaminants regularly. Avoid transferring sunscreen from hands or knees on to painted MagnaFlow as this can degrade the paint quality. Refer to the MRM Code of Practice for further information.



### Installation

Refer to the MRM Code of Practice for correct installation guidelines, particularly in regard to underlays/building papers, penetrations, flashings, fasteners, pitch and storage.



### Dissimilar metals

When dissimilar metals come into contact with each other, the electric potential difference between the metals establishes a corrosion cell, and accelerated corrosion can occur.

To avoid this problem, the following precautions should be observed:

- Avoid contact or discharges of water from brass or copper pipes on to ColorCote MagnaFlow and MagnaFlow PLUS.
- Do not use non-galvanised steel, copper, brass, lead, stainless steel or monel metal in direct contact with ColorCote MagnaFlow and MagnaFlow PLUS.
- Do not use lead flashings in contact with ColorCote MagnaFlow and MagnaFlow PLUS products. Soft edge aluminium or notching of flashings are the best solutions.
- Tanalised timber contains copper, so must not be used in direct contact with ColorCote MagnaFlow and MagnaFlow PLUS products. Use PVC tape or similar barrier to isolate potential problem points of contact between materials.

## Fastenings

Class 4 coated screws will give the best service life with ColorCote MagnaFlow and MagnaFlow PLUS products. Galvanised nails with pre-painted washers can be used on MagnaFlow.

Do not use stainless steel or monel fasteners on ColorCote MagnaFlow and MagnaFlow PLUS products.

In all cases ensure the fasteners are installed correctly with the ColorCote MagnaFlow and MagnaFlow PLUS product.

For further details refer to the MRM Code of Practice or consult your fastening supplier.

## Sealing and jointing

Where sealed joints are required, use only neutral cure silicon rubber sealant together with mechanical fasteners such as aluminium rivets. Do not weld or solder ColorCote products.

## Cut edge sealing

Coil-on is not required for ColorCote MagnaFlow and MagnaFlow PLUS.

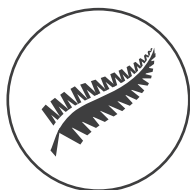
### Minimum maintenance

The service life is extended by regular washing. A manual wash every six months is recommended, more often if contaminants build up. Regularly inspect for damage and failing fasteners, and repair these. Failure to regularly wash areas that don't receive natural rainfall will void warranty.

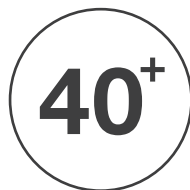
### Unwashed areas

These are typically those areas that are not washed by natural rainfall, such as the underside of eaves, sheltered roofs or wall cladding, under solar panels etc. ColorCote recommends the exclusion of unwashed areas by design wherever possible.

Where this is not possible, then a regular washing programme should be put in place. Contaminants should be removed by low pressure waterblasting (less than 1000psi) or washing with water and a soft bristle brush at least every 6 months, or more frequently in severe environments or if contaminant build-up keeps occurring. For full information, see the ColorCote Minimum Maintenance Schedule.



Leading  
New Zealand  
innovation in  
pre-painted steel  
and aluminium



Manufactured  
and marketed in  
New Zealand for  
more than  
40 years

968 Great South Road, PO Box 12 046, Penrose, Auckland 1642.  
Telephone: 0800 279 979 Facsimile: +64 9 579 7515  
[www.colorcote.co.nz](http://www.colorcote.co.nz)

ColorCote® is a registered trademark of Fletcher Steel Ltd.  
ZinaCore™, MagnaFlow™ and AlumiGard™ are trademarks  
of Fletcher Steel Ltd.

Pacific Coilcoaters is a trading division of Fletcher Steel Limited,  
a Fletcher Building Limited Business.

© Copyright PCC 2022

V1/4/2022

